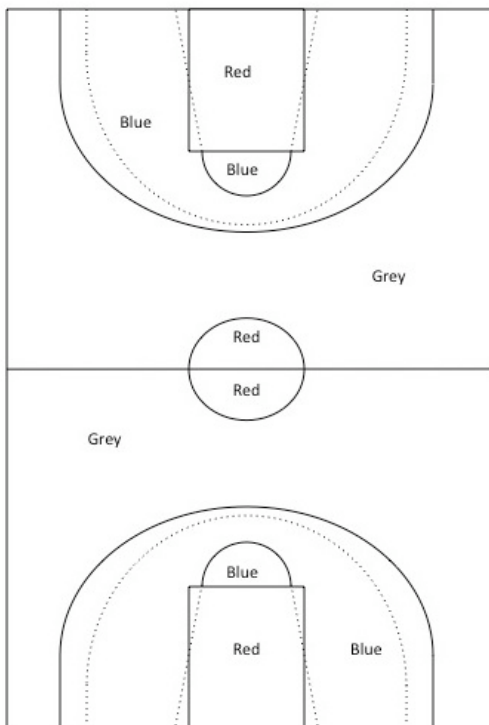


Repainting St. Joseph's Basketball Court

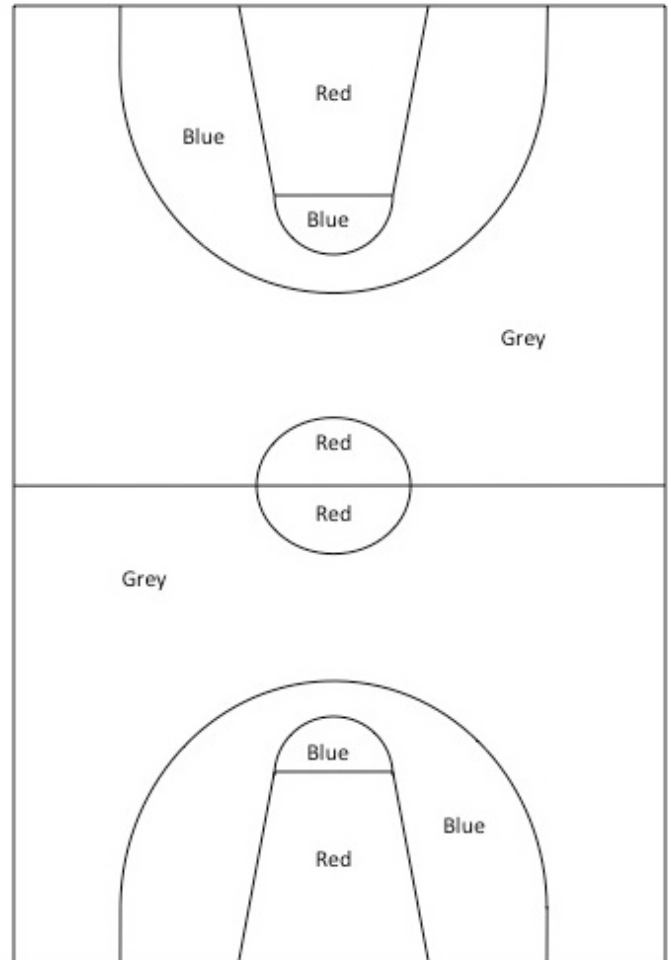
Suppose the administration of St. Josephs Secondary School decided to repaint the basketball court. There are four different colours on the court: red, blue, grey, and white.

The administration is repainting the court in a new way. Instead of the current lines and shapes, the court will be painted using the old lines.

Old Court



New Court



YOUR JOB:

The administration needs to know how much paint to buy. 8 teams will determine how much paint is needed in each colour: red, blue, grey, or white (for the lines).

How many litres of paint does the administration need to repaint the court?

*Hint: you will need to think about area and perimeter to find the answer. Show all your work and thinking when you write your solution!

WHAT YOU KNOW:

- 1 litre of paint covers approximately 16 square meters.
- Assume all curves form circles or semi-circles.
- The new court will use the old, faded lines.
- All measurements should be in meters.